



PARTICIPATION FACTS

Central Vermont's
Semi-Professional Theater

- ❖ Theater seating capacity: 150
- ❖ Handicap accessible
- ❖ Season: June 30 — October 15
- ❖ Number of shows: 3
- ❖ Ticket price: \$27.00 at the door
- ❖ \$25.00 online & by phone
- ❖ Season tickets: \$48.00 each on sale now!
- ❖ Show times: evenings at 7:30 pm
- ❖ Total performances: 34

Murder's Bad but Monday Can Kill You 2010



Drawer Boy 2010



The Waterbury Festival Playhouse is proud to announce its 2011 Season. After five very successful years we are thrilled that we will be offering three shows this year.

The Playhouse is all reserved seating, so you can pick your seats ahead of time.

Box office phone number: 802-498-3755

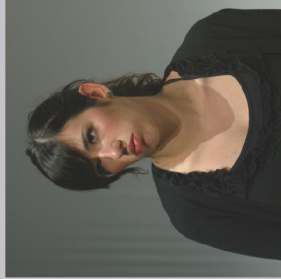
The box office opens 1 hour before show time.

Show tickets go on sale: 5/1/11

To order tickets and for more information go to:

WaterburyFestivalPlayhouse.com

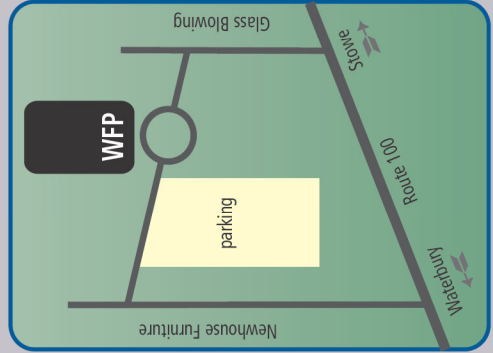
Credit cards accepted



DIRECTIONS

FROM I-89: Take exit 10 and drive north on Route 100. In 2.1 miles you will see the copper-roofed complex on your left with Champlain Chocolates, Cabot Cheese, etc. Just past that is a Sunoco station on the left. The next 2 drives on the left go to the theater.

FROM THE NORTH:
Drive past the Cold Hollow Cider Mill on Route 100 in Waterbury Center. In 0.5 miles you will come to the 2 drives for the theater on your right.



Lettice and Lovage

*Directed by Ethan T. Bowen
Written by Peter Shaffer*

Lettice Duffet, an expert on Elizabethan cuisine and medieval weaponry, is an indefatigable but daffy enthusiast of history and the theater. As a tour guide at Fustian House, one of the least stately of London's stately homes, she theatrically embellishes its historical past, ultimately coming up on the radar of Lotte Schoen, an inspector from the Preservation Trust. Neither impressed nor entertained by Lettice's free-wheeling history

JUNE 2011						
SUN	MON	TUE	WED	THU	FRI	SAT
		1	2	3	4	
5	6	7	8	9	10	11
12	13	14	15	16	17	18
19	20	21	22	23	24	25
26	27	28	29	30		

JULY 2011						
SUN	MON	TUE	WED	THU	FRI	SAT
					1	2
3	4	5	6	7	8	9
10	11	12	13	14	15	16
17	18	19	20	21	22	23
24	25	26	27	28	29	30
31						

SHOWS: 7:30 pm • Reserved seating

Year of the Duck

*Directed by George Pierce
Written by Israel Horowitz*

The members of a small-town community theater are assembling to begin rehearsals of Ibsen's "The Wild Duck." Harry Budd, a local photographer, is to play Hjalmar Ekdahl (also a photographer); his real life daughter, Sophie, plays daughter Hedvig; Rosie Norris will portray his wife in the play. Margaret, his real wife, is sitting

AUGUST 2011						
SUN	MON	TUE	WED	THU	FRI	SAT
	1	2	3	4	5	6
7	8	9	10	11	12	13
14	15	16	17	18	19	20
21	22	23	24	25	26	27
28	29	30	31			

this one out and has strong suspicions about Harry's relationship with Rosie. The pompously manipulative director of the play, John Sharp, is interpreting "The Wild Duck" for his own less than ethical purposes. This show explores the purity of truth and how society can often use

it to its own benefit, as well as the way life's paths lead to places we never could have imagined going.

SHOWS: 7:30 pm
Reserved seating

Don't Dress for Dinner

*Directed by George Pierce
Written by Marc Camoletti
Adapted by Robin Hawdon*

This boulevard comedy was a smash hit in Paris, where it played for over two years, and in London, where critical acclaim greeted the Apollo Theatre production. Bernard is planning a weekend with his chic Parisian mistress in a French farmhouse. He has arranged for a cordon bleu cook to prepare gourmet delights, is packing his wife Jacqueline off to her mother's, and has even invited his best friend to provide the alibi. It's foolproof; what could possibly

SEPTEMBER 2011						
SUN	MON	TUE	WED	THU	FRI	SAT
				1	2	3
4	5	6	7	8	9	10
11	12	13	14	15	16	17
18	19	20	21	22	23	24
25	26	27	28	29	30	

SHOWS: 7:30 pm • Reserved seating

OCTOBER 2011						
SUN	MON	TUE	WED	THU	FRI	SAT
						1
2	3	4	5	6	7	8
9	10	11	12	13	14	15
16	17	18	19	20	21	22
23	24	25	26	27	28	29
30	31					

TICKETS

\$25.00 in advance \$27.00 at the door.
Advance tickets must be purchased by 5:00 on show day.

Please go to our web site:
www.WaterburyFestivalPlayhouse.com

Or call:
802-498-3755

Or fax or mail this form:
FAX: 802-244-1530

WATERBURY FESTIVAL PLAYHOUSE
2933 Waterbury-Stowe Road
Waterbury Center, Vermont 05677

NAME _____

EMAIL _____

PHONE _____

DATE OF SHOW _____ # TICKETS _____

CREDIT CARD # _____

TYPE OF CREDIT CARD _____ EXP. DATE _____

BILLING STREET ADDRESS _____

BILLING ZIP CODE _____

\$ ADDED DONATION (Thank you!) _____

Please consider making a donation to the Players. We have to raise \$130,000 to bring this project to full operation. Your help would be greatly appreciated!

